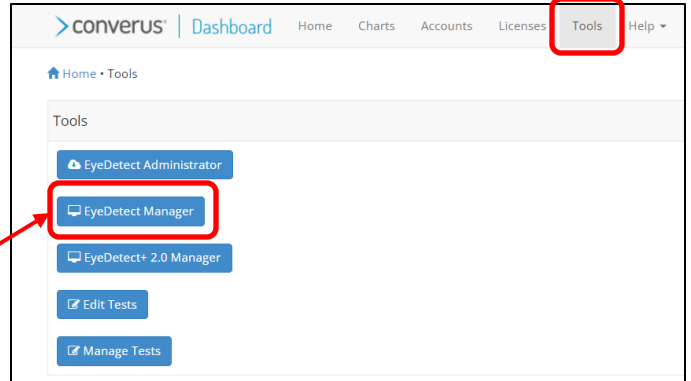




EyeDetect Manager is used to monitor a test so it must be downloaded and run on a device separate from the EyeDetect Station.

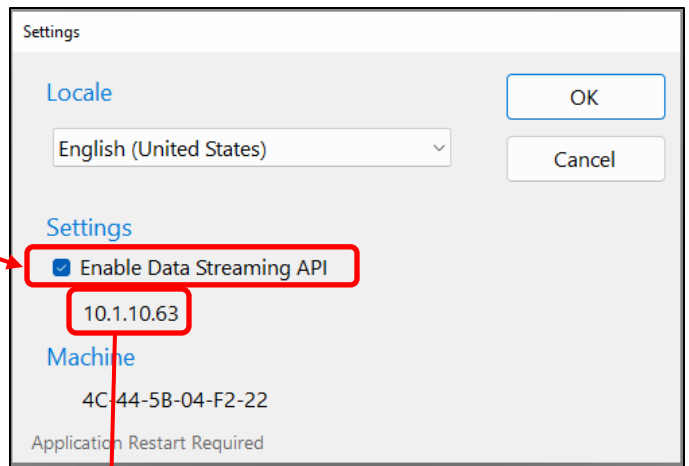
Download EyeDetect Manager

1. On a Windows computer or tablet, login to EyeDetect Dashboard. Select **Tools** from main menu.
2. Click on **EyeDetect Manager** icon to initiate installation. When app finishes downloading, it opens.



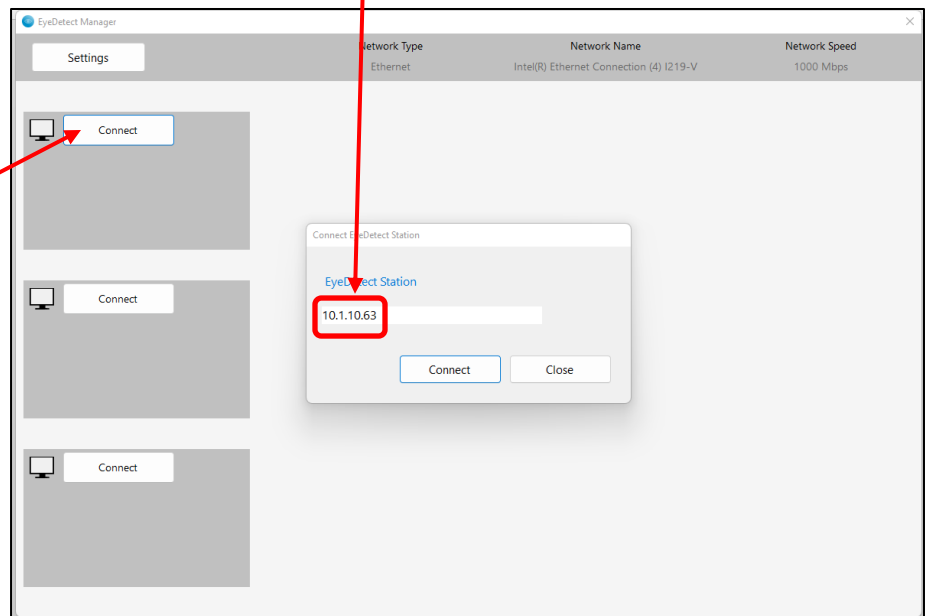
Find IP Address

1. On Station open EyeDetect, click on **File > Settings**.
2. In **Settings**, check box "Enable Data Streaming API."
3. The IP address is directly below this box. It will change based on location.



Connect EyeDetect Station to EyeDetect Manager

1. On desktop of Windows computer or tablet, click on **EyeDetect Manager** icon.
2. In the home screen of EyeDetect Manager, the 3 gray boxes on left have **Connect** buttons. Press **Connect** on any box.
3. Type in EyeDetect Station's IP address and click **Connect**.
4. If successful, a small window appears indicating: **Connected to EyeDetect Station: XX.X.XX.XX**





EyeDetect Manager Features

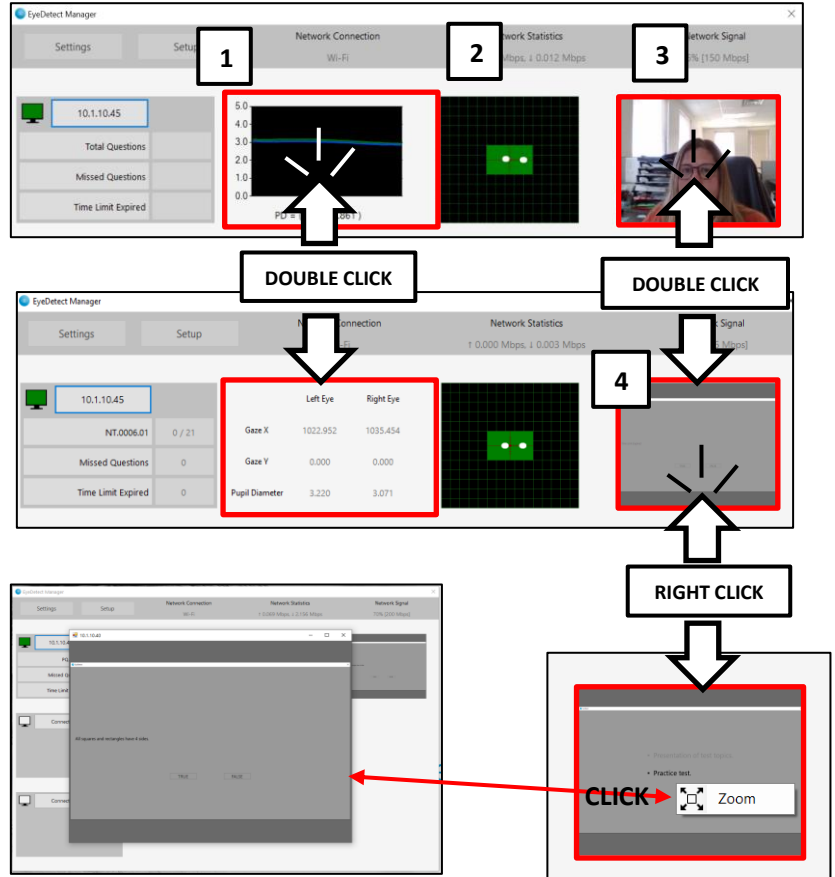
Each connected EyeDetect Station shows 3 windows.

- 1** Left window: real-time pupil dilation data.
NOTE: double-clicking on window will switch back and forth numbers-only or graph format.
- 2** Middle window: telemetry screen shows position of examinee's eyes; you can ensure examinee's eyes are in correct position.
- 3** Right window: live video feed of the examinee's face.

NOTE: double-clicking on window will switch back and forth between examinee's face and the screen the examinee is currently looking at during test.

- 4** Right window: right-click and window will also give a zoom option, so test screen can be seen clearly.

EyeDetect Manager can be used to monitor up to 3 different stations at a time.



Progress of test

Screen on the far left with the IP address monitors:

- Total number of questions in current section of test and how many the examinee has answered
- Total number of questions answered incorrectly
- Total number of questions not answered because examinee took too long

