



Step 1 – Laptop Stand

1. Remove laptop stand from small gray bag.
2. Pull it apart, expanding to an “X” shape then open up so legs drop down to form “V” shape.
3. Place the prop-up legs in first hole at bottom.




Step 2 – Laptop

1. Find laptop in black sleeve and remove it.
2. Open wide and place on stand.
3. Find power cord, connect it to laptop and plug it in.



Quick Start – EyeDetect Station Set-Up

Step 3 - Turn on Computer

1. Press power button on top right front side of keyboard. 
2. You will know laptop is “on” when power button brightens.
3. Eventually, Dell logo will appear and then login screen with EyeDetect background.



Step 4 – Mouse

1. Locate on/off switch on underside of mouse (turning it on will change the indicator light from red to green).
2. Note: There is a Logitech dongle pre-installed into one of the USB ports on the computer. This enables the wireless mouse.



Step 5 - Windows Password

1. Double click the mouse to bring up Windows login.

2. Type in default password:
11223344

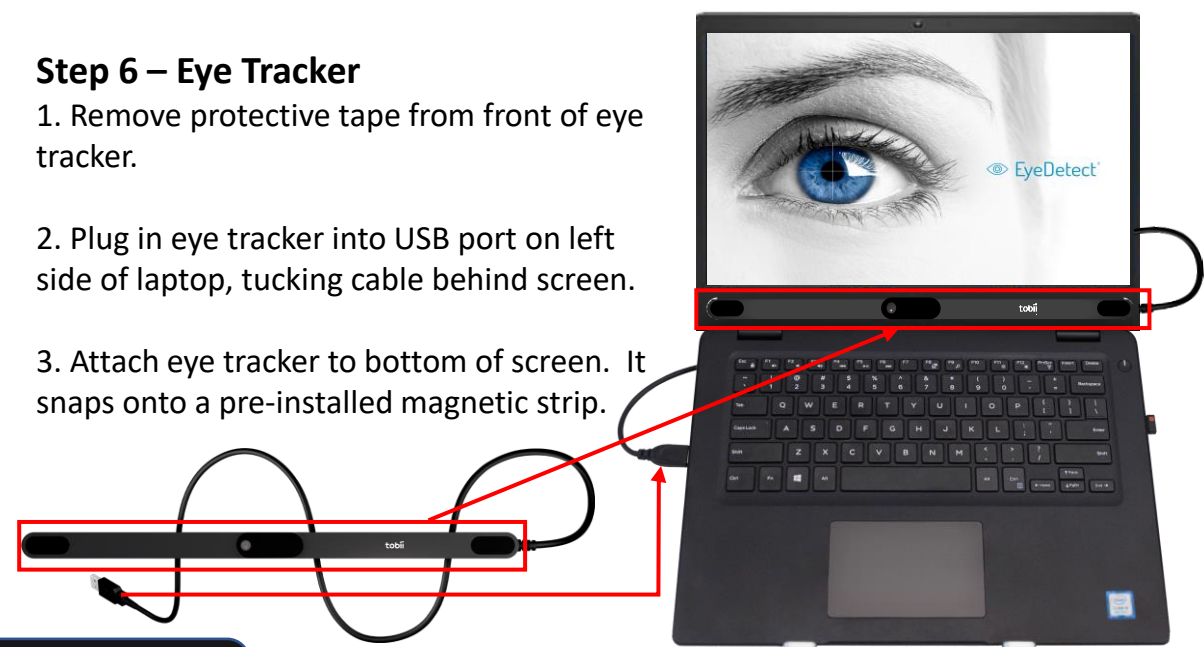


Step 6 – Eye Tracker

1. Remove protective tape from front of eye tracker.

2. Plug in eye tracker into USB port on left side of laptop, tucking cable behind screen.

3. Attach eye tracker to bottom of screen. It snaps onto a pre-installed magnetic strip.



Step 7 – Chin Rest Stand

1. Remove round heavy metal base and black pipe with attached chin cup from plastic.

2. Screw pipe with chin cup to round base.



Step 8 –Headphones

1. Finish by plugging in headphones.

